

Orchids have very specific nutritional requirements and, although it is true that they can survive on very low levels of nutrition, they will only reach their full magnificence if properly fed. Just ask a professional grower or a consistent winner at orchid shows.

Orchids should not be fed with general purpose plant 'foods' for many reasons. Most importantly the nitrogen supply in the mass market product will usually contain significant levels of ammonia and urea. Urea in particular can become toxic very quickly in orchid growing media and is best avoided for that reason. Orchid Focus is completely free of urea.

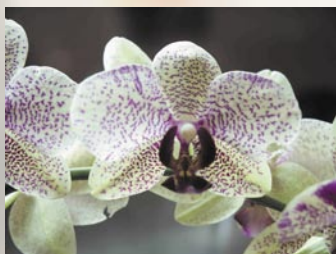
Orchid Focus

for peak performance and health

Precise professional formulations for orchids, based on pure minerals and rich organic plant acids

Orchid Focus

- Orchid Focus is manufactured from the purest and most soluble mineral salts. It is fortified and enhanced with a complex profile of organic plant acids.
- It is precisely formulated for the needs of orchids – contains no urea.
- It is non-toxic and poses no environmental hazards.
- Orchid Focus is an ideal feeding programme for orchids. It can help produce healthier, more vigorous plants and brighter, longer lasting flowers.



Orchid Focus is used and recommended by:

The Eric Young Foundation

and by these leading UK orchid retailers:

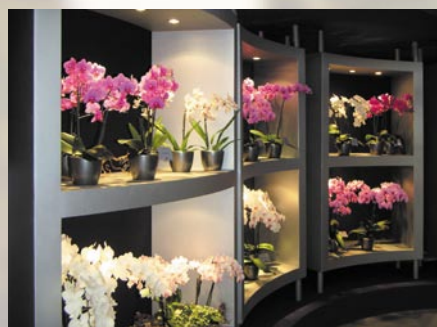
Burnham Nurseries • Deva Orchids
Laurence Hobbs Orchids Ltd • Orchids by Peter White
Plants Plus • Plested Orchids • Regal Orchids

Grow and Bloom Formulations

Orchid Focus is available in two separate formulations:

- Orchid Focus Grow has high levels of nitrogen, derived from nitrates, to encourage the growth of healthy shoots and leaves.
- Orchid Focus Bloom has enhanced levels of phosphorus and potassium to support heavy flowering.

Both formulations contain a complex profile of mineral salts and organic compounds.



**Orchid Focus
Grow and
Bloom are
available in:
100 ml, 300 ml,
1 litre**

Feeding orchids

Almost all orchid species and hybrids will benefit from a regular feeding schedule. It is especially valuable when preparing plants for exhibition or sale.

The most commonly cultivated genera – *Cymbidium*, *Paphiopedilum*, *Cattleya*, *Phalaenopsis*, and *Dendrobium* – will all benefit from a proper programme of nutrition. They can be fed through the roots and by foliar application – misting the leaves.

For full Orchid Focus instructions please call Growth Technology, or download from our website at www.growthtechnology.com



Growth Technology

Growth Technology Ltd. Unit 66, Taunton Trading Estate, Norton Fitzwarren, Taunton, Somerset TA2 6RX, UK
Tel: +44 (0)1823 325291 Fax: +44 (0)1823 325487 Email: info@growthtechnology.com Web: www.growthtechnology.com